

Airfal

 **atenea**

Safety Technology Experience



INDEX

- 1 WHAT IS ATENEA
- 2 BENEFITS
- 3 WIRING
- 4 SERVICES

WHAT IS ATENEA

ATENEA is an **Intelligent Safety Solution** in which we offer a comprehensive and efficient service: from the initial diagnosis of the situation, through the complete design of the Solution, its installation and its maintenance.

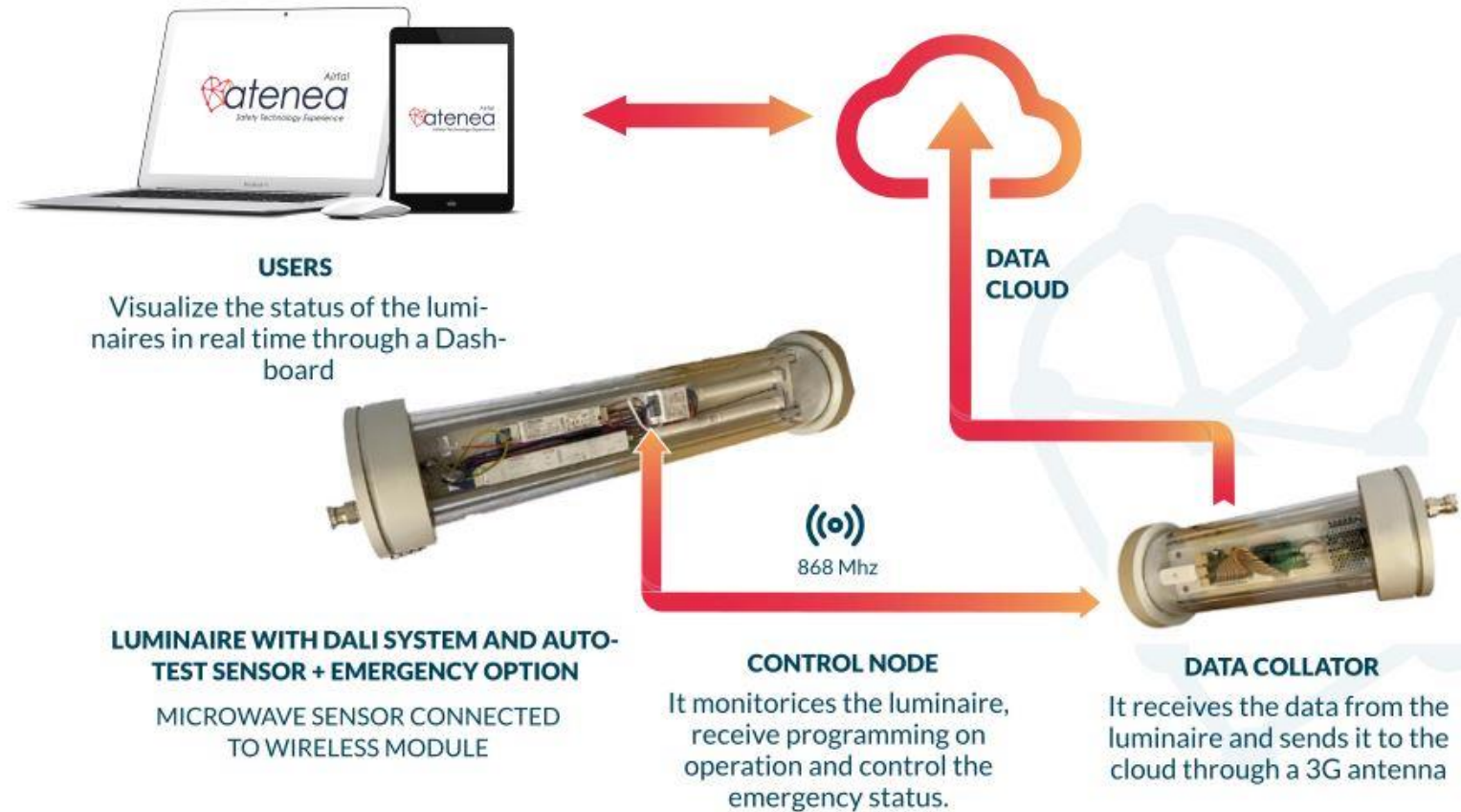
We count with a **multidisciplinary highly qualified** and experienced team that defines each solution after listening and understanding the needs of the customer, as personalization is one of our trademarks.

BENEFITS

- Reduction of carbon footprint and increasing our commitment to the environment
- Digitization of new facilities and/or digital transformation of existing facilities with minimal investment
- Maximizing energy efficiency
- Reducing maintenance-related operating costs
- Increasing Safety control at the facility with remote control
- Reducing accident risks
- Increased Access security over already integrated systems



WIRING



SERVICES

COMMISSIONING



ENERGY EFFICIENCY



ATENEA
LIGHTING TECHNOLOGY SOLUTION
FOR SAFETY



FACILITY DIGITAL TRANSFORMATION



SUSTAINABILITY



HEALTH & SAFETY

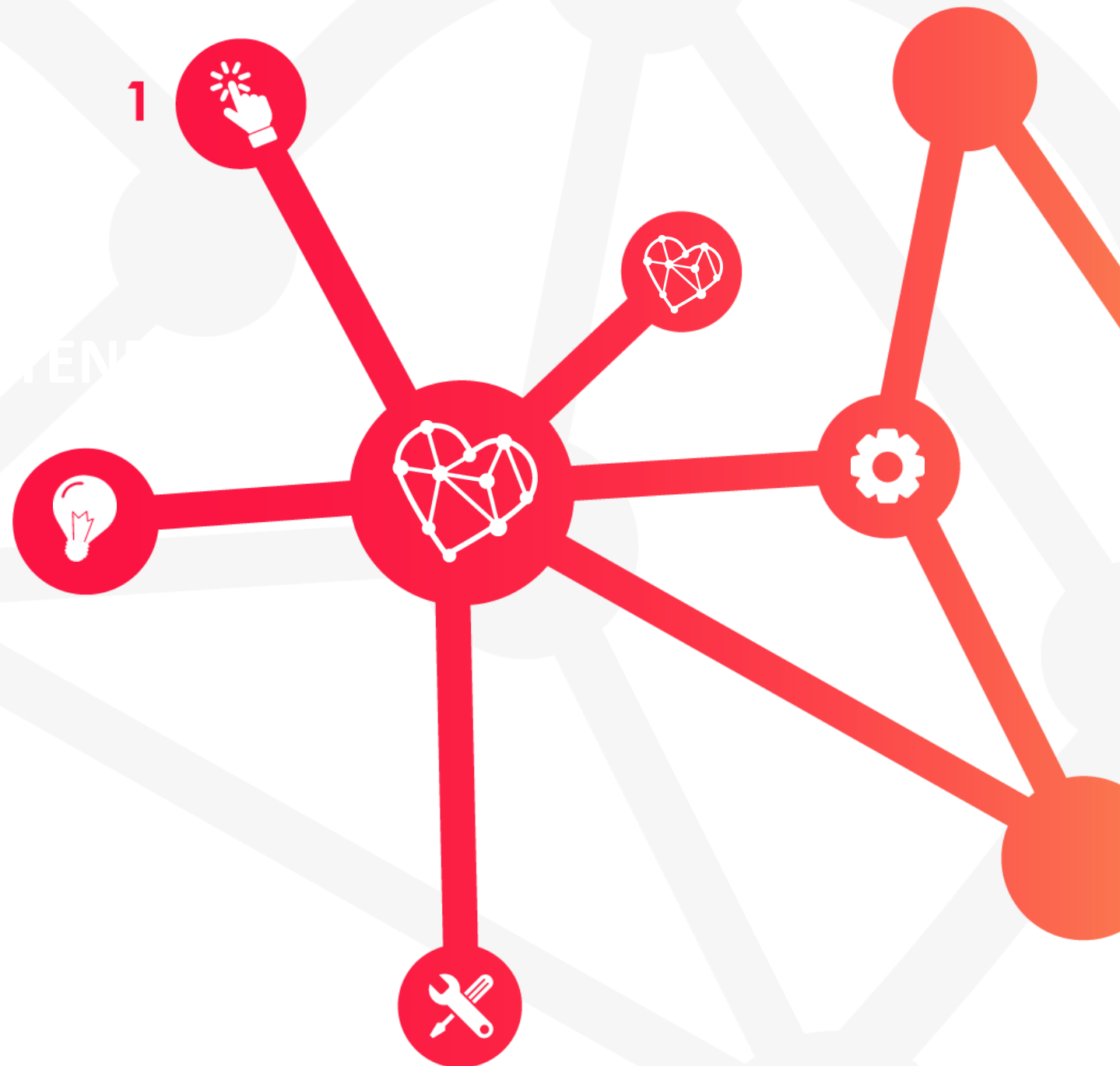


1 DIGITAL TRANSFORMATION

We design comprehensive Lighting Technological Solutions for Safety, turning any facility into an entity equipped with intelligence.

Our services make possible the supervision and remote control of the equipment, its preventive maintenance and their integration with different sensors and / or monitoring devices, adding value to the activities of our customers and demonstrating a clear commitment to industry 4.0.

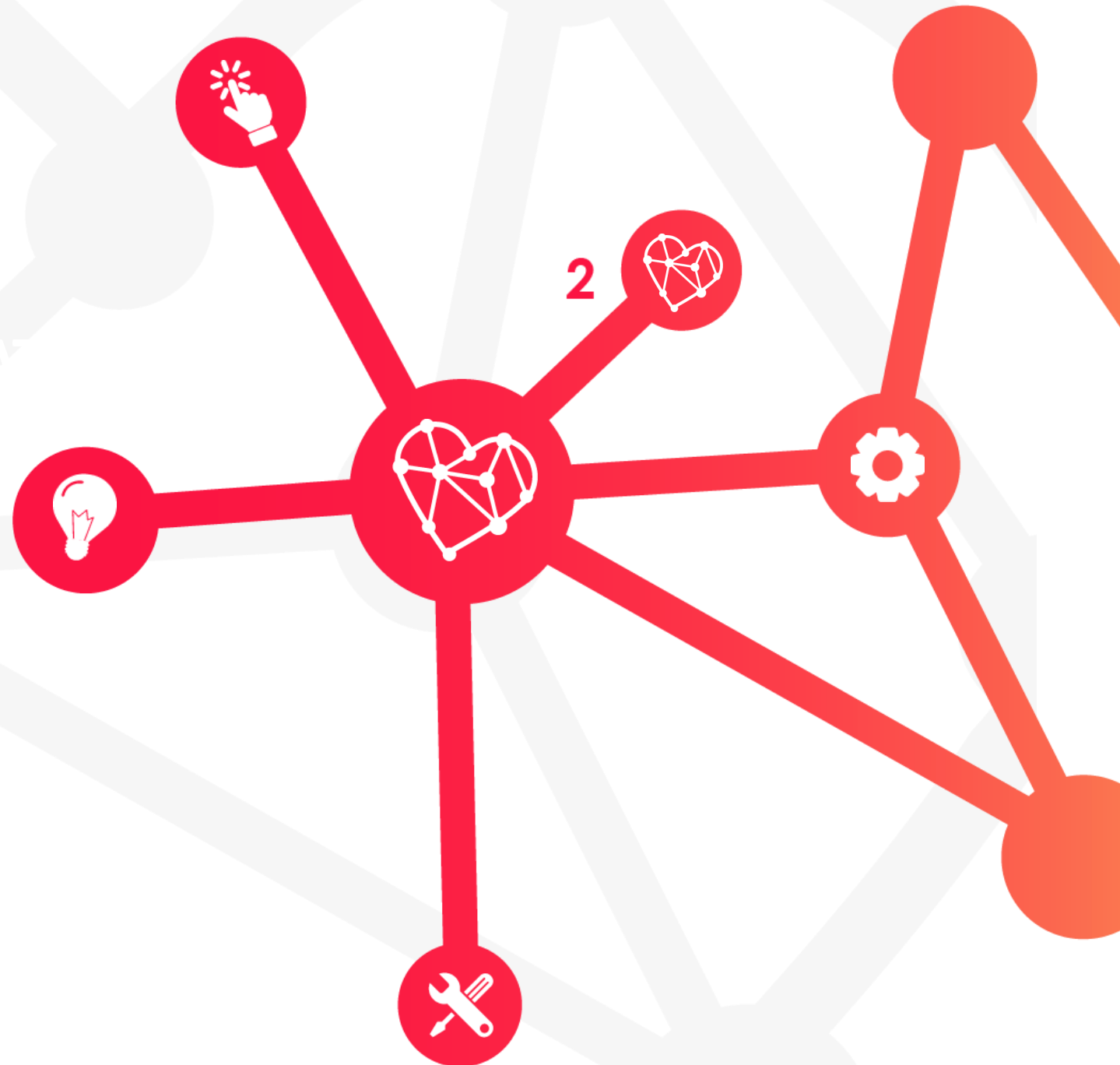
Listening and understanding the **needs** of our customers, we develop and implement the necessary solutions to improve their activity and strategy indicators in Safety (**SPI**), **Carbon Footprint**...



2 SUSTAINABILITY

At AIRFAL, aware of the great environmental problems that we face globally, we understand sustainability as a fundamental pillar in our mission, vision and values, and for this reason we carry it very much within our organization.

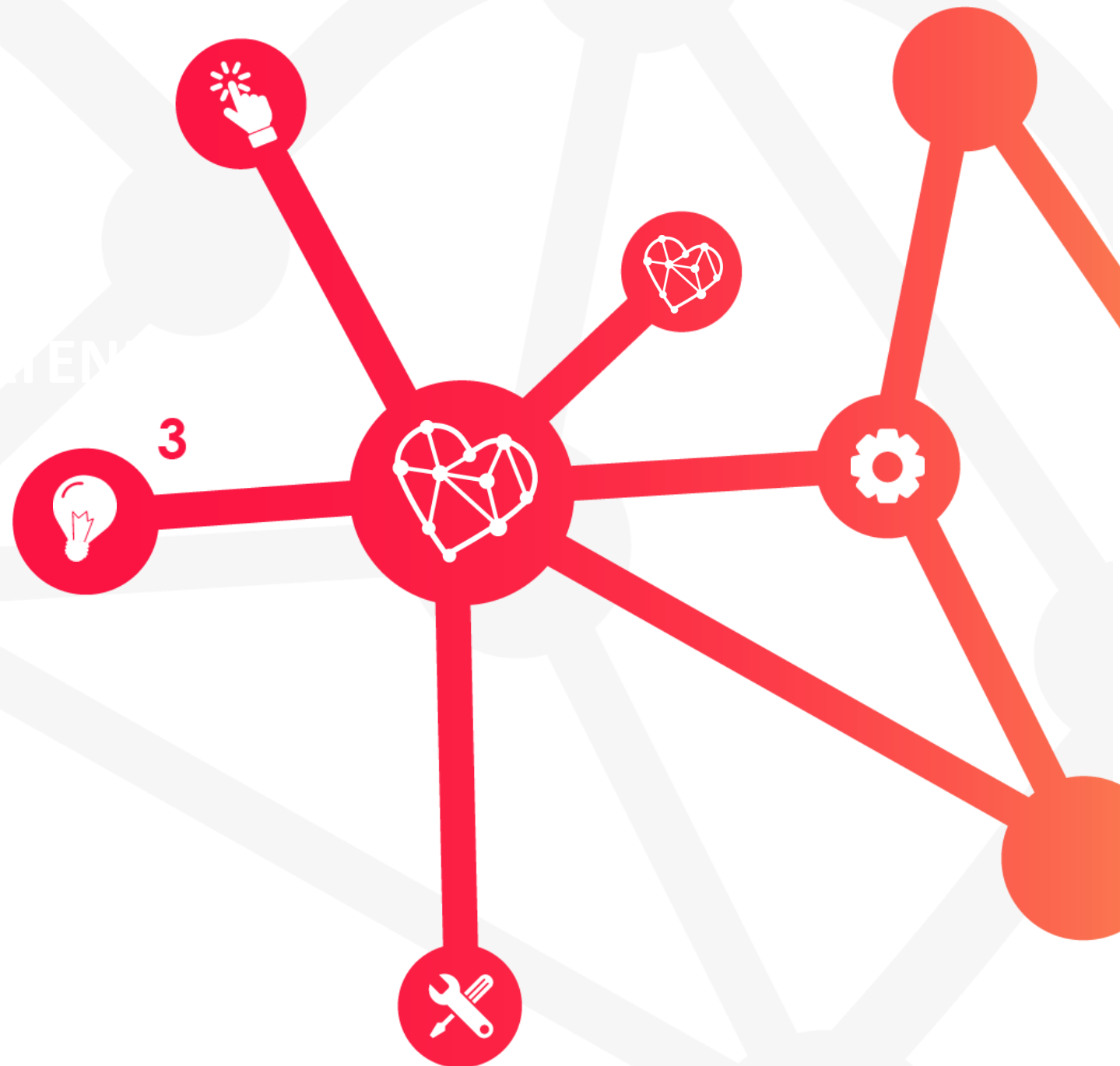
Since 2020 we calculate and verify the **carbon footprint** voluntarily, as well as having a carbon footprint reduction plan.



3 ENERGY EFFICIENCY

At Airfal we contribute to the **improvement of energy efficiency** in facilities through the most advanced solutions on the market, carrying out lighting studies, diagnostics and energy consumption consulting.

We have an experienced team of professionals that identifies lighting needs, contemplating the technical and functional requirements of the installation and activity to be developed, proposing the most **energy efficient** and technically advanced solution on the market, including solutions that bring well-being to users and improving their productivity based on the **Human Centric Lighting** concept.





Airfal

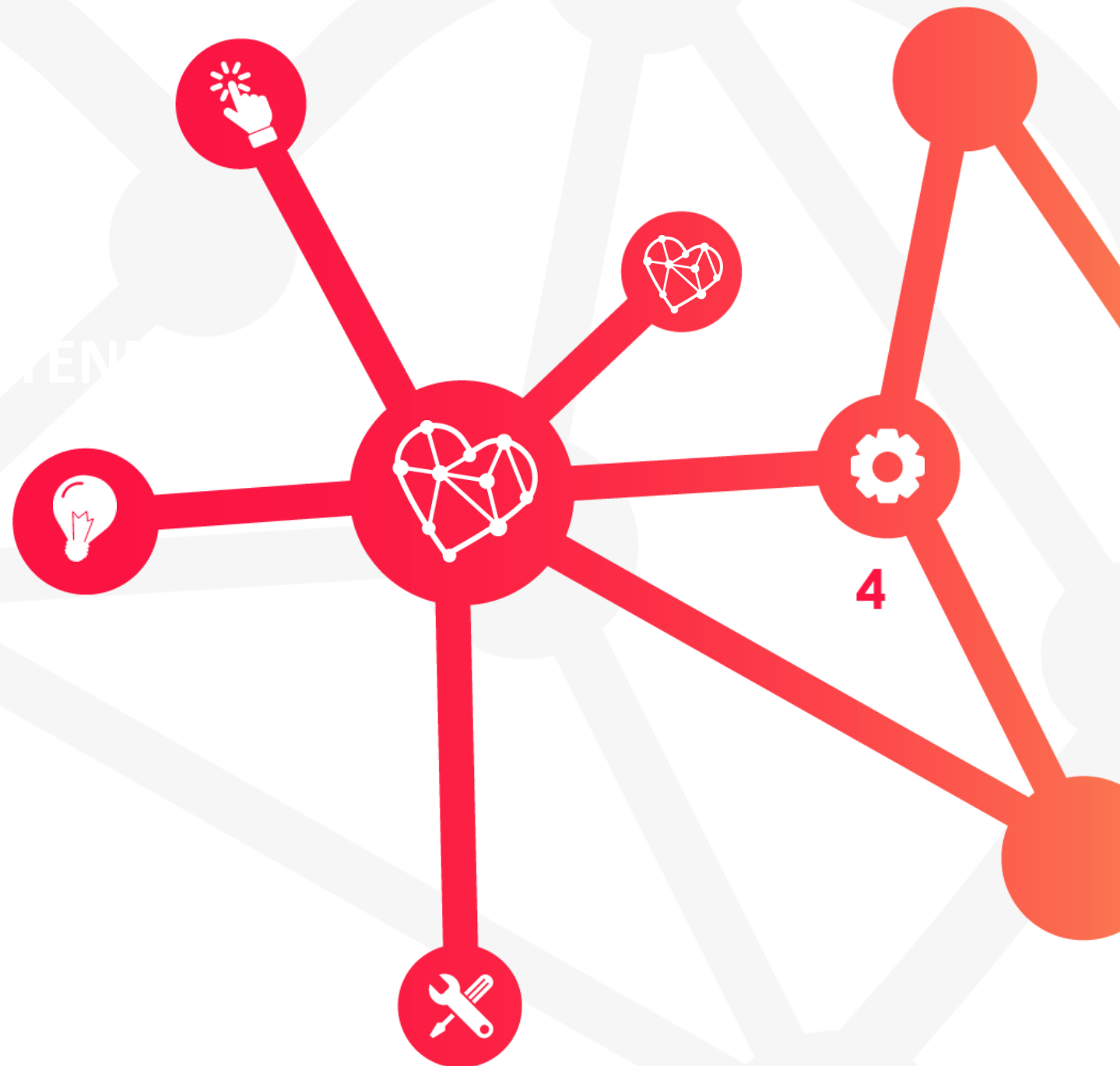
atenea

Safety Technology Experience

4 HEALTH & SAFETY

Advanced management of **preventive maintenance** of your company's lighting installations will bring you great benefits such as a high level of safety in work areas, greater lighting of the spaces or improvement of productivity and ergonomics.

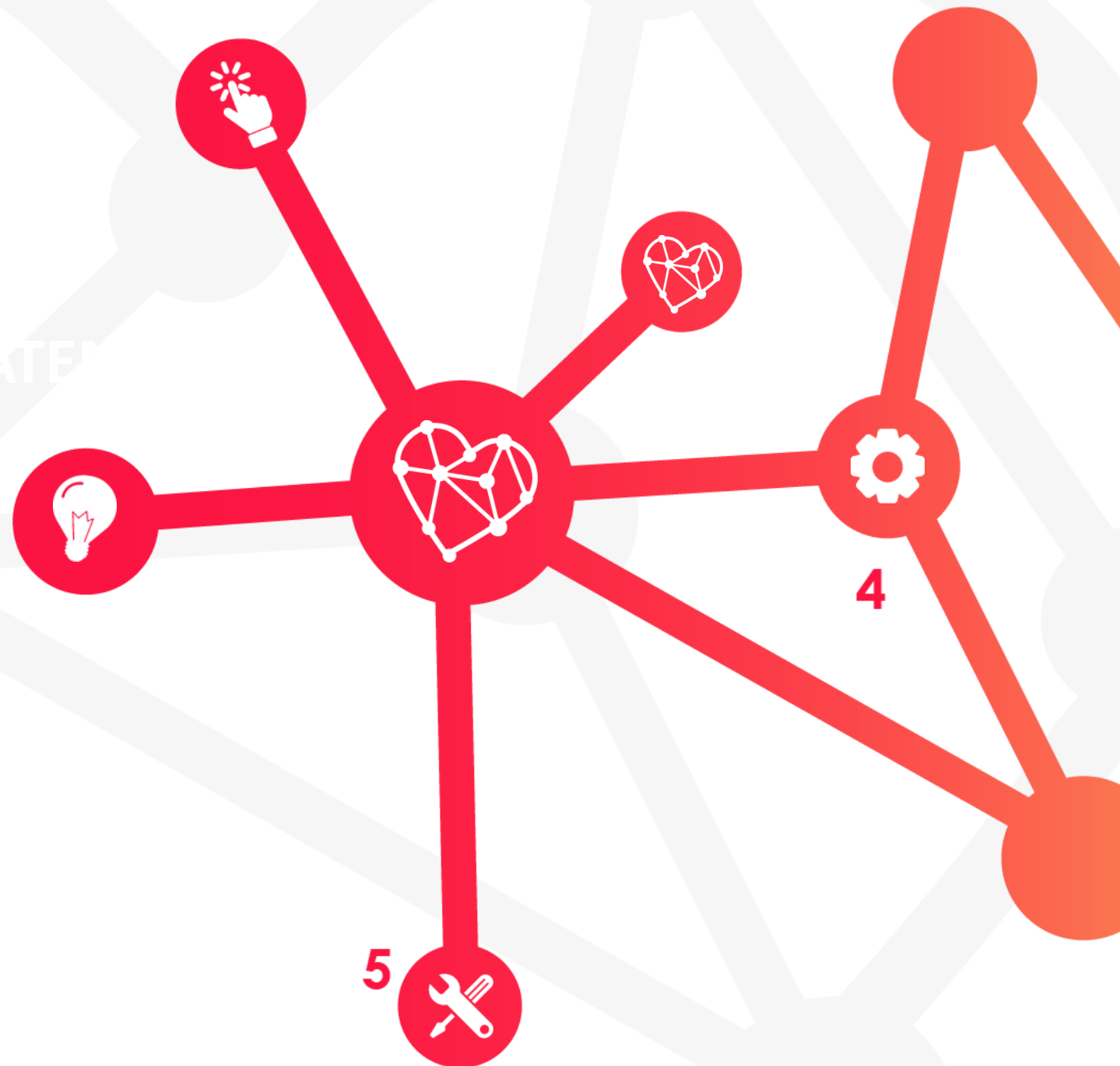
With our control solutions you will have an adequate diagnosis and future adaptations of your lighting needs, which will result in a reduction in maintenance costs.



5 COMMISSIONING

ATENEA includes a service of **installation, renovation, configuration** (commissioning) and integration of the intelligent solution and improvement of existing installations, especially in potentially explosive atmospheres.

Innovation is one of our hallmarks, not only applied to our products, but also to installation services and their state-of-the-art tools in terms of functionality, security, communication and connectivity, technology and respect for the environment.





www.airfal.com
Airfal - Río Ésera, 5
Villanueva de Gállego (50830)
- Zaragoza (Spain)
Tel: +34 976 18 58 09